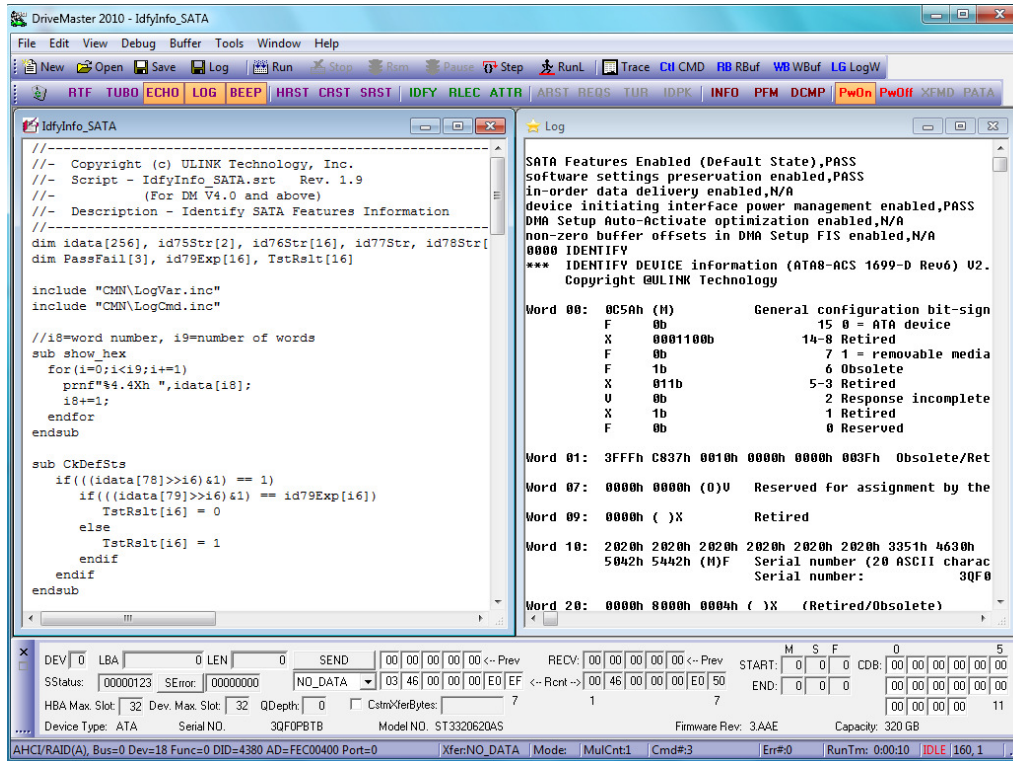




DRIVEMASTER 2010 PRO SATA

ULINK TECHNOLOGY

DriveMaster 2010 Pro SATA Interface



Hardware Platform

- **Generic AHCI Platform**
 - AMD • Intel • JMicron • NVIDIA • VIA
- **Generic IDE / PATA**
- **Intel**
 - ICHx (IDE, AHCI and RAID Mode)
- **Marvell**
 - 6081 PCI-X SATA II / 61xx PCI-E Series
- **Silicon Image**
 - Sil3124 PCI-X / Sil3132 / 3531PCI-E
- **VIA 5324**
- **All third party HBAs complied with the vendor specs of the above Marvell and Silicon Image chipsets**

DM 2010 Pro SATA **New Features**

SATA NCQ new features

- NCQ Priority • NCQ Streaming
- NCQ Queue Management
- Send/Receive FPDMA Queued

Auto Partial to Slumber Transition ATA/ATAPI Command Set 2 (ACS-2)

- Data Set Management • Request Sense for ATA
- Sanitize Device • DMA equivalents for PIO commands

Command Profile for ATA Device

- Total number of commands
- Percentage of each command issued

Performance Profile for ATA Device

- IOPS/MBPS • Total Transferred Bytes
- Total Command Execution Time • Total Running Time

TCG supports

- Trusted Send/Receive/No Data
- Enterprise/OPAL SSC support
- Direct Payload manipulation
- Level 0 discovery



DRIVEMASTER 2010 PRO SATA

ULINK TECHNOLOGY

*Other Products to make DriveMaster even more **powerful** !!*

ULINK ATA/SATA Protocol Suite

Scripts include:

- ◆ DCO SATA
- ◆ Mandatory commands
- ◆ Write Cache Flush Time
- ◆ SMART Set
- ◆ Power State
- ◆ Power management
- ◆ NCQ
- ◆ IPM
- ◆ SSP
- ◆ SCT
- ◆ Security Feature Set

and many more

ULINK Regression Testing Suite

Scripts include:

- ◆ BER
- ◆ NCQ, DMA, Data Compare
- ◆ DST Captive /Offline Timing
- ◆ Power State Regression
- ◆ SCT Temperature Regression
- ◆ Security Feature Set
- ◆ Security Erase
- ◆ DMA, NCQ, PIO Command Distribution and Service Time.

and more

Script Library Samples:

All Transfer Modes (PIO/DMA/UDMA) Tests / All Transfer Length/ All LBA Tests
Data Compare Suite • Random/Sequential/Butterfly/Triangular
Soft Reset • HBA Reset• COMRESET• R_ERR/R_OK
BIST• PHY Event Counter • HIPM • DIPM
Asynchronous Signal Recovery • Asynchronous Notification • Port Multiplier

TCG Test Suite

Available Now

OPAL Application Note Test Suite
ENT Application Notes Test Suite

Coming Soon

TCG Protocol Test Suite
TCG Storage ATA Interaction Test Suite
TCG Storage SCSI Interaction Test Suite