

**DriveMaster Enterprise SAS/FC**  
(DM 2010 ENT SAS/FC)

**Installation Guide**

**Revision 2.0**

**ULINK Technology Inc.**

**May 2010**



## TABLE OF CONTENT

<b>1</b>	<b>SYSTEM REQUIREMENTS</b> .....	<b>1</b>
<b>2</b>	<b>HBA CONFIGURATION</b> .....	<b>1</b>
2.1	ADD-ON SAS/FC CONTROLLER INSTALLATION .....	1
2.2	SAS/FC CONTROLLER DRIVER INSTALLATION .....	1
<b>3</b>	<b>ULINK POWER HUB INSTALLATION</b> .....	<b>2</b>
<b>4</b>	<b>INSTALL DM 2010 ENT SAS/FC</b> .....	<b>3</b>
<b>5</b>	<b>RUN DM 2010 ENT SAS/FC</b> .....	<b>4</b>
5.1	USB KEY LICENSE CONTROL .....	4
5.1.1	<i>DM 2010 Ent SAS/FC Single</i> .....	4
5.1.2	<i>DM 2010 Ent SAS/FC Network Client Station</i> .....	4
5.2	START DM 2010 ENT SAS/FC APPLICATION .....	4
5.3	CONFIGURE DM 2010 ENT SAS/FC .....	5
<b>6</b>	<b>INSTALL &amp; RUN DM 2010 ENT SAS/FC NETWORK LICENSE SERVER</b> .....	<b>6</b>
6.1	IMPORTANT INSTRUCTIONS FOR USER .....	6
6.2	SYSTEM REQUIREMENT FOR DM 2010 ENT SAS/FC NETWORK LICENSE SERVER .....	6
6.3	INSTALL DM 2010 ENT SAS/FC NETWORK LICENSE SERVER .....	6
6.4	RUN DM 2010 ENT SAS/FC NETWORK LICENSE SERVER .....	6
<b>7</b>	<b>SUPPORT INFORMATION</b> .....	<b>8</b>
7.1	SAMPLE TEST SCRIPTS.....	8
7.2	HELP .....	8
7.3	CUSTOMER SUPPORT AND FAQ.....	8

ULINK's DriveMaster 2010 Enterprise SAS/FC (DM 2010 Ent SAS/FC) Serial consists of two products:

- 1) DM 2010 Ent SAS/FC DM 2010 Ent SAS/FC Single
- 2) DM 2010 Ent SAS/FC Network, which includes License Server & Client Station

## 1 System Requirements

This section is for DM 2010 Ent SAS/FC Single/Network Client Station. The system requirement for DM 2010 Ent SAS/FC Network License Server is on Chapter 6 DM 2010 Ent SAS/FC Network License Server Installation Guide.

- 1) Operating System: Windows 7, Windows Vista, Windows XP, Server 2008 or Server 2003.
- 2) CPU: Hyper - Threading CPU, Core™ 2 processor is recommended.
- 3) RAM: 1 GB or above, 2 GB is recommended for Windows Vista.
- 4) Video Card: 32MB, 64MB and above is recommended.
- 5) System Drive: minimum 100MB free space

## 2 HBA Configuration

The system hard drive needs to be connected to an add-on SAS/FC controller if user wants to use the host controller on the motherboard as the testing host.

The Device under Test (DUT) needs to be connected to the testing host such as a SAS/FC port on the motherboard or on the Controller Card (Add-on Card).

### 2.1 Add-on SAS/FC Controller Installation

- 1) Remove the cover of the PC system.
- 2) Plug in the add-on SAS/FC controller card the PCI-E slot.
- 3) Fasten the controller card bracket to the system case.

### 2.2 SAS/FC Controller Driver Installation

- 1) After installing the add-on controller card and rebooting the system, Window setup will show a "**Found New Hardware**" dialog box. Under Windows, "**Mass Storage Controller**" will be displayed. (The title of the storage controllers might be different depending on the operating system)
- 2) Insert the add-on controller driver diskette into the PC.
- 3) Select "**Install the software automatically**" and press the "**Enter**" key. If user is using a driver that has not been digitally signed by Microsoft, user will be asked if he wants to continue the installation. Click on "**Continue anyway**".

Note: User might also install the driver manually if it is already in the local drive.

- 4) After the "**New Hardware Wizard**" has finished installing the add-on controller driver, click "**Finish**".



### 3 ULINK Power Hub Installation

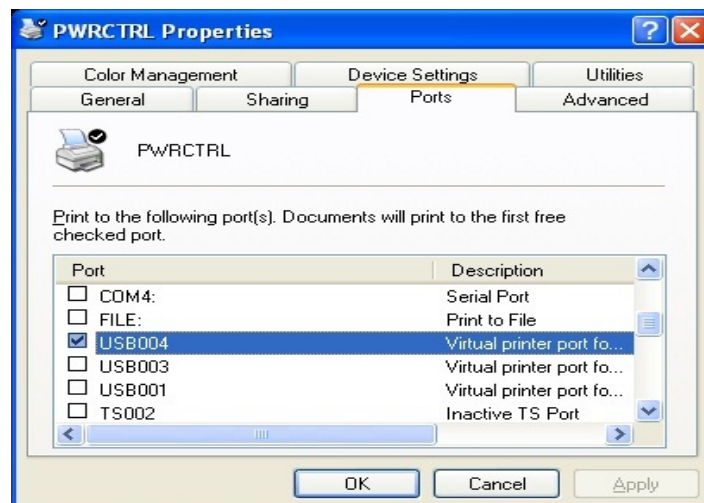
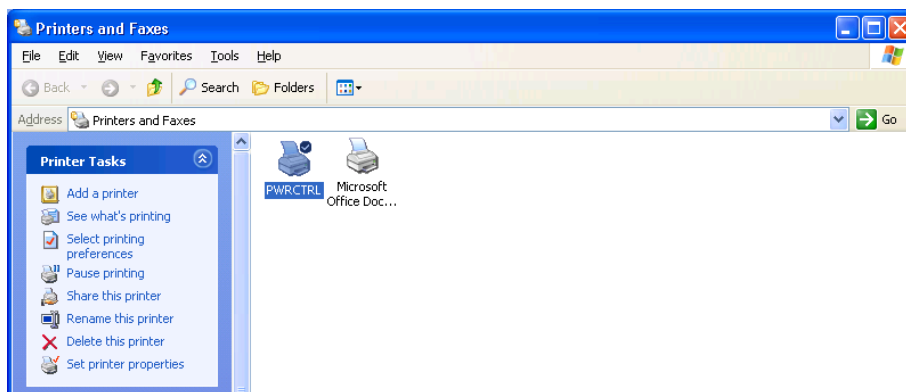
ULINK Power Hub is controlled through a virtual printer.

To install ULINK Power Hub, add a printer with the following settings:

- 1) Select the port to USB00X, where X must be the USB port that ULINK power hub is connected to
- 2) Select the printer driver according to your OS as the table shown below:

OS	Printer to Be Selected
Windows XP	Epson DFX-5000 Epson 600Q ESC/P2
Windows Vista	Epson DFX-5000
Windows 7	Epson DFX-9000
Windows Server 2008	Epson DFX-9000

- 3) The printer name must be **PWRCTRL**




For detail information, please refer to **ULINK Power Hub Installation Guide**.



## 4 Install DM 2010 Ent SAS/FC

The instruction is for DM 2010 Ent SAS/FC Single and DM 2010 Ent SAS/FC Network Client Station.

For DM 2010 Ent SAS/FC Network License Server installation please check Chapter 6 DM 2010 Ent SAS/FC Network License Server Installation Guide.

- 1) Insert USB license key, which comes with the retail version of DM 2010 Ent SAS/FC, into a USB port.
- 2) Insert DM 2010 Ent SAS/FC CD (Client Station CD for DM 2010 Ent SAS/FC Network) into the CD-ROM drive. If installation does not start automatically, run AUTORUN.EXE from the root directory of the CD.
- 3) Follow the instruction to complete the installation.
- 4) ULINK DM2010 icon  will show on the desktop when the installation is finished.

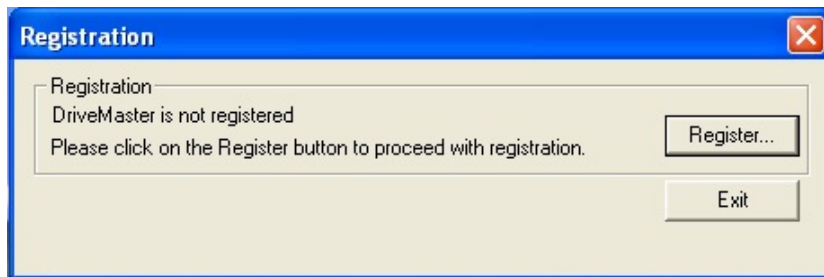


## 5 Run DM 2010 Ent SAS/FC

### 5.1 USB Key License Control

#### 5.1.1 DM 2010 Ent SAS/FC Single

- 1) Check to make sure the USB key is in the USB port all the time while running DM 2010 Ent SAS/FC.
- 2) If DM 2010 Ent SAS/FC is launched without USB key, user will see the following “Registration” dialog box:




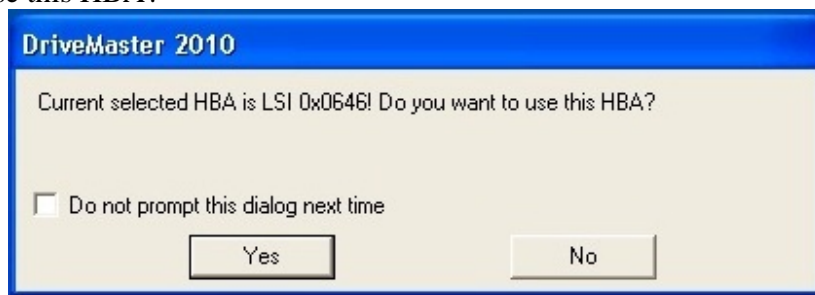
- 3) Click on Exit, then Insert USB key before restarting DM 2010 Ent SAS/FC.

#### 5.1.2 DM 2010 Ent SAS/FC Network Client Station

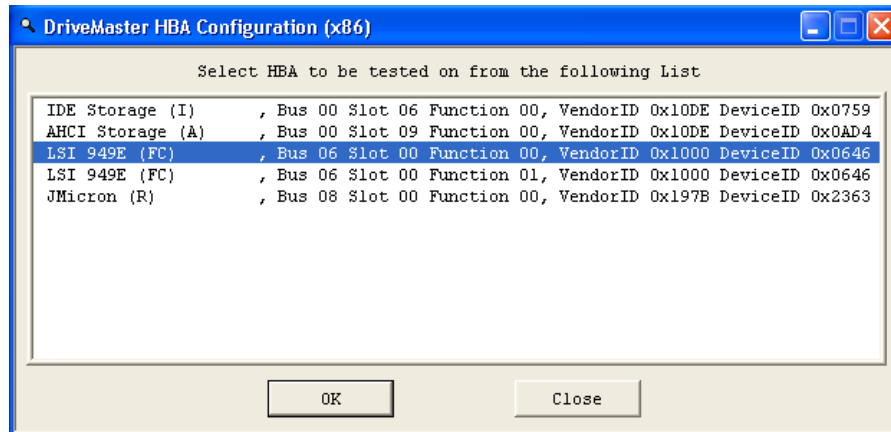
User needs to install DM 2010 Ent SAS/FC Network License Server software first. For License Server installation details please check Chapter 6 DM 2010 Ent SAS/FC Network License Server Installation Guide. USB license key is controlled by Network License Server.

## 5.2 Start DM 2010 Ent SAS/FC Application

- 1) Click ULINK DM2010 icon  to launch DM 2010.
- 2) “DriveMaster 2010” window will pop up and ask “Current selected HBA is xxxx! Do you want to use this HBA?”

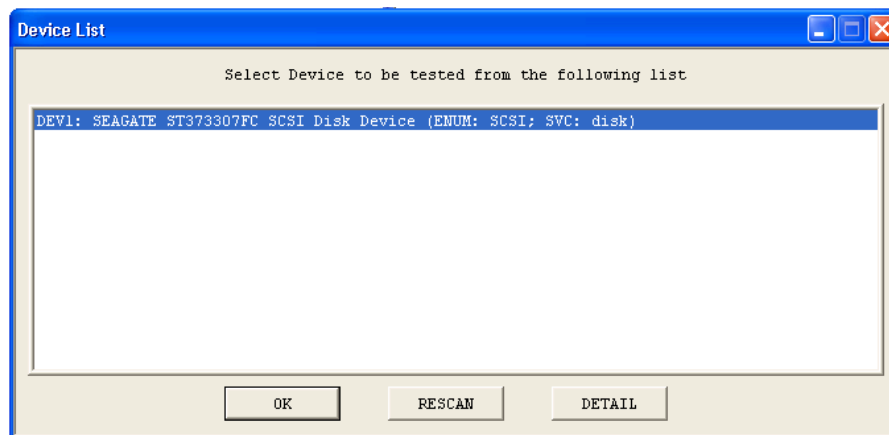


- 3) If you select “Yes”, DriveMaster 2010 will be launched.
- 4) If you select “No”, the “**DriveMaster HBA Configuration**” window will appear. A list of available HBAs will show up in the window. Select SAS or FC HBA to be used and click “OK.”



5) There are two methods to select or switch port under DriveMaster:

- User can go to **“Tools”** on the menu bar → **“Select Port/Device”**, and then select the proper port from the dialog box prompted as shown below and click **“OK”**.



- Click **“RESCAN”** if you cannot see your device that is connected to the controller. If you are still not able to see your device. Check your device, cable or controller and its driver to see whether it is installed correctly.
- Click **“DETAIL”** to look at the information of your device and the installed controller.

### 5.3 Configure DM 2010 Ent SAS/FC

1) If the following status appears in the right Log Window under DriveMaster, it indicates that DUT is ready.

**RTF: XX XX XX XX XX XX 00 00 XX XX XX XX XX**

2) On the **“DM Command Bar”**, user will find **“PwOn”** and **“PwOff”** buttons. These two buttons will not work until user completes the Power HUB setup. (Refer to Chapter 3 **“ULINK Power Hub Installation”**)

Note: All script commands related to power cycle will require ULINK Power Hub.

## 6 Install & Run DM 2010 Ent SAS/FC Network License Server

### 6.1 Important Instructions for User

- 1) **Only local network is allowed.** No VPN and no extranet access are allowed.
- 2) Make sure the Network USB key is attached to the Network Server USB port all the time while running DM 2010 Ent SAS/FC Network.

Note: If user unplugs the USB Key while DriveMaster is running, all DriveMaster program on the client systems will exit automatically.

### 6.2 System Requirement for DM 2010 Ent SAS/FC Network License Server

- 1) Operation System: Windows XP and above
- 2) System Drive: minimum 5MB free space
- 3) Network card

### 6.3 Install DM 2010 Ent SAS/FC Network License Server

- 1) Insert the DM 2010 Ent SAS/FC Network USB key into a USB port.
- 2) Insert the Drive Master License Center CD into the CD-ROM drive. If installation does not start automatically, run AUTORUN.EXE from the root directory of the CD.
- 3) Follow the screen instruction to complete the installation.

### 6.4 Run DM 2010 Ent SAS/FC Network License Server

- 1) Run DriveMaster 2010 Ent SAS/FC Network License Server program from *Start Menu* on the server system.
- 2) After launching DriveMaster Network License Server, you will see a “SmarxOS Network Server” icon in the Windows Notification (Taskbar) area



Figure 1

- 3) There is no need to do any setup or configuration for SmarxOS Network Server. The purpose of this Server is to provide license log window as well as status update. All the licenses issued will be done by SmarxOS server automatically.

To view log information, double click SmarxOS Network Server icon. (See Figure 2)

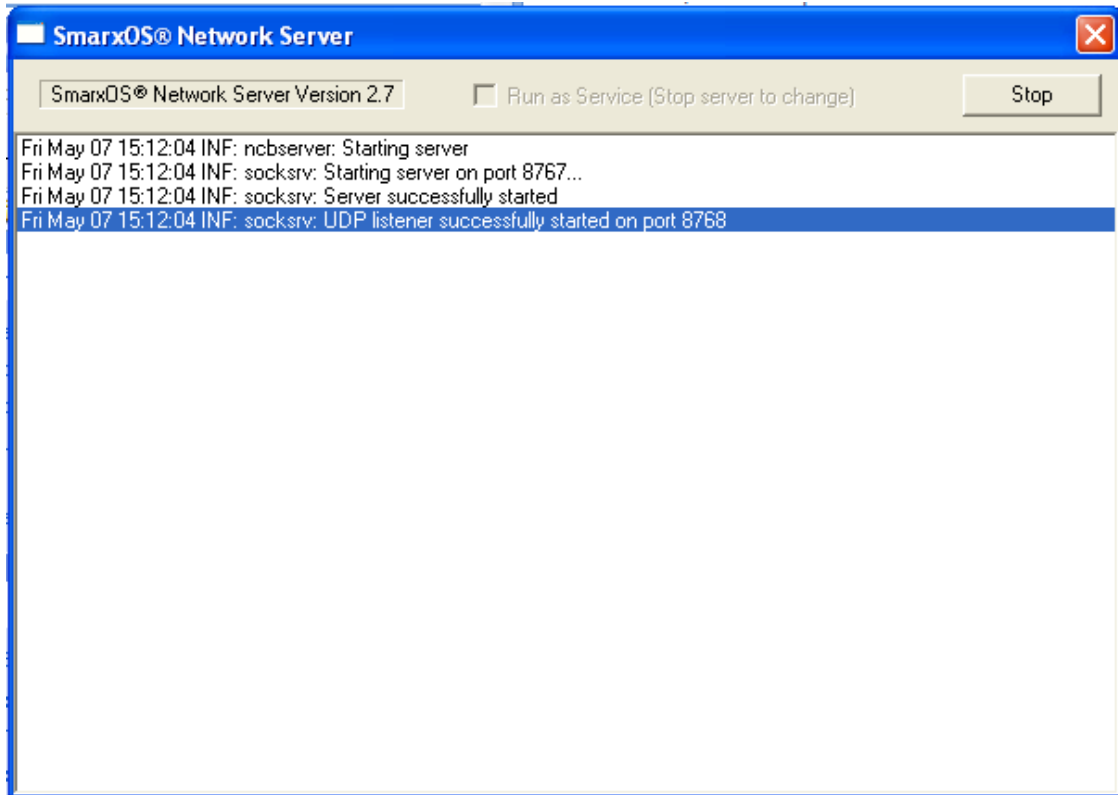


Figure 2

## 7 Support Information

### 7.1 Sample Test Scripts

User can find all the sample scripts from the following paths:  
%Installation Drive%\Program Files\ULINK DM 2010\v###\Scripts

### 7.2 Help

With DM 2010 Ent SAS/FC open, press **F1** on the keyboard or go the “**Menu Bar**” and click “**Help**” then select “**Contents**” to bring up the Help file.

### 7.3 Customer Support and FAQ

FAQ Link: <http://ulinktech.com/support/index.html>

If user has any question about the installation of DM 2010 Ent SAS/FC, please contact ULINK either by email or phone:

ULINK TECHNOLOGY, INC.  
Email: [support@ulinktech.com](mailto:support@ulinktech.com)  
Phone: (408) 446-8455

