

DriveMaster 2010 Professional Network

Installation Guide

Revision 1.0

ULINK Technology Inc.

Oct 2009

1	LICENSE SERVER SYSTEM REQUIREMENTS	3
2	INSTALLATION OF LICENSE SERVER	3
3	RUNNING LICENSE SERVER	3
4	DRIVEMASTER 2010 PRO NETWORK CLIENT	4
4.1	NETWORK CLIENT SYSTEM REQUIREMENT.....	4
4.2	INSTALLATION OF NETWORK CLIENT	4
4.3	RUNNING DM 2010 PRO NETWORK CLIENT	4
5	SAMPLE TEST SCRIPTS	5
6	HELP	5
7	CUSTOMER SUPPORT AND FAQ	6

1 License Server System Requirements

- 1) CPU: Duo Core or above, hyper-threading is recommended
- 2) RAM: 1GB or above
- 3) Video Card: 64MB and above
- 4) HDD: minimum 100MB free space for system drive
- 5) OS: Windows XP and above
- 6) As a reliable network station within network environment

2 Installation of License Server

- 1) Insert DriveMaster 2010 Pro Network version USB key into an USB port.
- 2) Insert the “DriveMaster 2010 Pro Network License Server” utility CD into the CD-ROM drive. If installation does not start automatically, run AUTORUN.EXE from the root directory of the CD.
- 3) Follow the screen instruction to complete the installation.

3 Running License Server

- 1) **Only local network is allowed.** No VPN and no extranet access are allowed.
- 2) Make sure the Network USB key is in the USB port all the time while running DM 2010 Pro Network.
Note: If user unplugs the USB Key while DriveMaster is running, all DriveMaster program on the client systems will exit automatically.
- 3) Run DriveMaster 2010 Pro Network License Server program from *Start Menu* on the Server system.
- 4) After lunch DriveMaster Network License Server, you will see a “SmarxOS Network Server” icon in the Windows Notification (Taskbar) area



Figure 1

There is no need to do any setup or configuration for SmarxOS Network Server. The purpose of this Server is to provide license log window as well as status update. All the licenses issued will be done by SmarxOS server automatically.

To view logging information, double click SmarxOS Network Server icon. (See Figure 2)

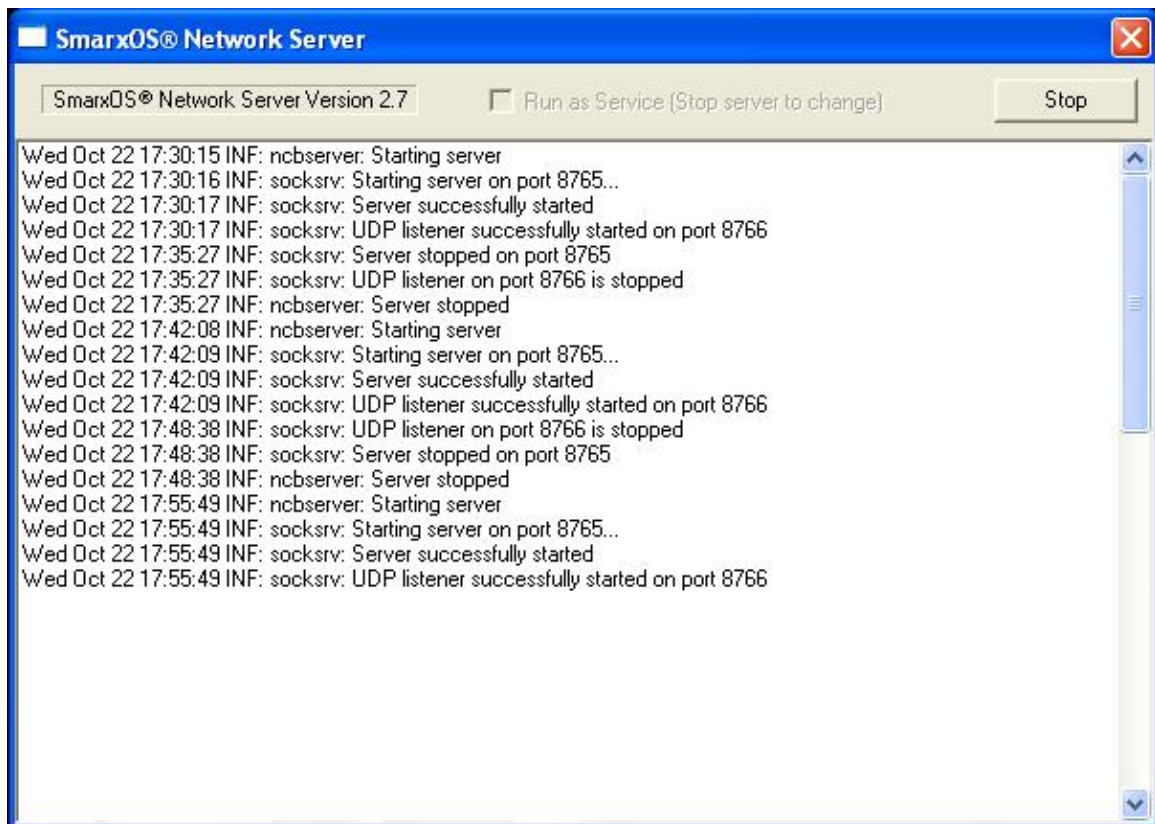


Figure 2

4 DriveMaster 2010 Pro Network Client

4.1 Network Client System Requirement

The requirements are the same as DriveMaster 2010 Pro SATA. User can get DriveMaster 2010 Pro SATA Installation Guide and download it from <http://www.ulinktech.com/library.asp>.

4.2 Installation of Network Client

Insert the DM 2010 Pro Network Client CD into the CD-ROM drive. If installation does not start automatically, run AUTORUN.EXE from the root directory of the CD. Follow the screen instruction to complete the installation.

4.3 Running DM 2010 Pro Network Client

- 1) Run DriveMaster 2010 Pro Network Client CD from *Start Menu* on the client system.

- 2) “**Connecting to Server...**” notification will be shown on the center of the screen. After the Client is connected to the License Server the window will close automatically.
- 3) When DM 2010 Pro Network Client is invoked, the “**DriveMaster HBA Configuration**” window will appear. A list of available HBAs will show up in the window. Select the correct HBA to be used and click “**OK.**”
- 4) There are two methods to select or switch port under DriveMaster.
 - User can go to “**Tools**” on the menu bar → “**Select Port/Device**”, and then select the proper port from the dialog box prompted.
 - User can also input the command on the script window, “**SEL_HBA_PORT PortID**” and then run this command.
 Example:
 Select port “**0**” as the testing port, the command is “**SEL_HBA_PORT 0**”
 Select port “**1**” as the testing port, the command is “**SEL_HBA_PORT 1**”
- 5) If the following status appears in the right log window under DriveMaster, it indicates that Device under Test (DUT) is ready.
RTF: XX XX XX XX XX XX 50 50 XX XX XX XX XX
- 6) If the following status appears in the right log window under DriveMaster, it indicates it fails to find the DUT at the current selected port. User can follow the step 4) on the above to locate the corresponding port.
RTF: XX XX XX XX XX XX 7f 7f XX XX XX XX XX
- 7) Click the “**RTF**” button on the DM Toolbar, TF data will display in the Log window. If the seventh and eighth data on screen both indicate “**50**”, then the communication between host and DUT is established correctly.
- 8) On the “**DM Command Bar**”, user will find “**PwOn**” and “**PwOff**” buttons. These two buttons will not work until user completes the Power Supply/HUB setup.
 Note: All script commands related to power cycle will require ULINK special Power Supply/Hub.

5 Sample Test Scripts

User can find all the sample scripts from the following paths:

- 1) %Installation Drive%\Program Files\ULINK DM2010 PRO NET\v###\Scripts
- 2) %Installation Drive%\Program Files\ULINK DM2010 PRO NET\v###\DM Control\Scripts

6 Help

With DM2010 Pro Network open, press **F1** on the keyboard or go the “**Menu Bar**” and click “**Help**” then select “**Contents**” to bring up the Help file.

7 Customer Support and FAQ

If user has any question about the installation of DriveMaster License Center, please contact ULINK either by email or phone:

ULINK TECHNOLOGY, INC.

Email: support@ulinktech.com

Phone: (408) 446-8455