

DriveMaster 2008 Enterprise SAS
(DM 2008 Ent SAS)

Installation Guide

Revision 1.0

ULINK Technology Inc.

July 2008

1	SYSTEM REQUIREMENTS	3
2	HBA CONFIGURATION	3
2.1	ADD-ON SAS CONTROLLER INSTALLATION.....	3
2.2	SAS CONTROLLER DRIVER INSTALLATION.....	3
3	ULINK POWER HUB INSTALLATION	4
4	INSTALL DM 2008 ENT SAS.....	5
5	RUN DM 2008 ENT SAS.....	6
5.1	USB KEY CHECK	6
5.2	RUNNING DM 2008 ENT SAS	6
6	SAMPLE TEST SCRIPTS.....	7
7	HELP	7
8	CUSTOMER SUPPORT AND FAQ.....	7

1 System Requirements

- 1) Windows Vista, XP or 2003 Operating System
Note: Windows XP and above is highly recommended
- 2) CPU: at least **Hyper - Threading CPU**, Duo Core is recommended
- 3) 512MB RAM or higher, 1024MB is recommended for Vista
- 4) Minimum 32MB video card. 64MB and above is recommended.
- 5) At least 100MB free space for system drive

2 HBA Configuration

2.1 Add-on SAS Controller Installation

- 1) Turn off the PC, and open the PC case
- 2) Simply plug-in the SAS controller to the PCI-E slot on the system

2.2 SAS Controller Driver Installation

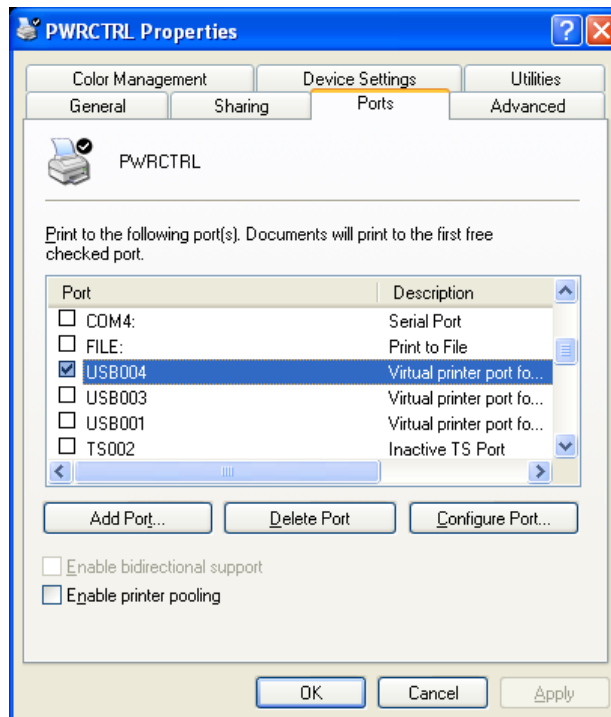
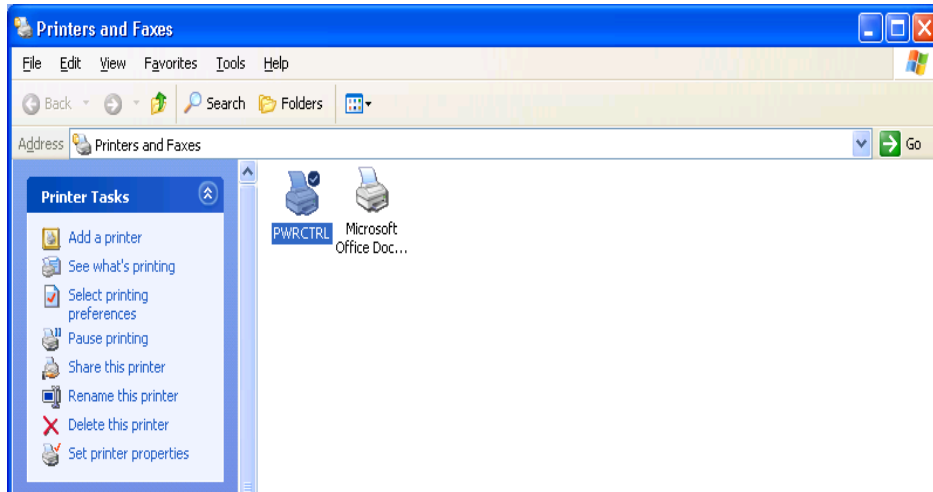
- 1) After installing the add-on SAS controller card and rebooting the system, Window setup will show a “**Found New Hardware**” dialog box. Under Windows, “**Mass Storage Controller**” will be displayed. (The title of the storage controllers might be different depends on the operating system)
- 2) Insert the add-on controller driver diskette into the PC.
- 3) Select “**Install the software automatically**” and press the “**Enter**” key. If user is using a driver that has not been digitally signed by Microsoft, user will be asked if user wants to continue the installation. Click on “**Continue anyway**”.
Note: User might also install the driver manually if it is already in the local drive.
- 4) After the “**New Hardware Wizard**” has finished installing the add-on controller driver, click on “**Finish**”.

3 ULINK Power Hub Installation

ULINK Power Hub is controlled through a Virtual Printer.

To install ULINK Power Hub, add a printer with the following settings:

- 1) Select the port to USB00X, where X must be the USB port that ULINK power hub is connected to
- 2) Select the printer driver for either “Epson DFX-5000” or “Epson 600Q ESC/P2”
- 3) The printer name must be set to **PWRCTRL**



For detail information, please refer to ULINK Power Hub Installation Guide.

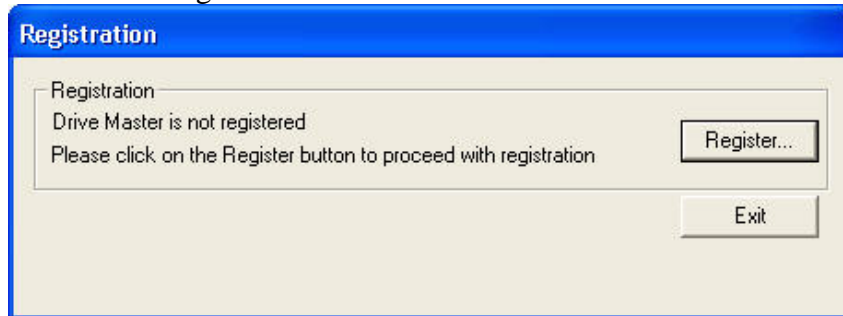
4 Install DM 2008 Ent SAS

- 1) Insert the USB key, which comes with the retail version of DM 2008 Ent SAS, into a USB port.
- 2) Insert the DM 2008 Ent SAS CD into the CD-ROM drive. If installation does not start automatically, run AUTORUN.EXE from the root directory of the CD.
- 3) Then, follow the screen instruction to complete the installation.

5 Run DM 2008 Ent SAS

5.1 USB Key check

- 1) Check to make sure the USB key is in the USB port all the time while running DM 2008 Ent SAS.
Note: If user unplugs the USB Key while DriveMaster is running, the program will exit automatically.
- 2) When launching DM 2008 Ent SAS without USB key, user will see the following “Registration” dialog box:



- 3) Click on Exit, then Insert USB key before restarting DM 2008 Ent SAS.

5.2 Running DM 2008 Ent SAS

- 1) When DM 2008 Ent SAS is invoked, the “**DriveMaster HBA Configuration**” window will appear. A list of available SAS HBAs will show up in the window. Select the correct HBA to be used and click “**OK.**”
- 2) User can go to “**Tools**” on the menu bar → click on “Select Port/Device” to select or switch SAS device
- 3) On the “**DM Command Bar**”, user can click the “**INQR**” (Inquiry), “**RCAP**” (Read Capacity), “**REQS**” (Request Sense), or “**TUR**” (Test Unit Read) to quickly verify the communication and connection between the device and host. If, the above buttons are not enabled, it indicated that the host did not detect any device, or the device has been disconnected from the host.
- 4) Additionally, user will find “**PwOn**” and “**PwOff**” buttons. These two buttons will not work until user completes the Power Supply/Hub setup. (Refer to item “**3 ULINK Power Supply/Hub Installation**”)
- 5) “**HRST**” is host reset button, user can use it to re-synchronize or build the communication between the device and host

Note: All script commands related to power cycle will require ULINK special Power Supply/Hub.

6 Sample Test Scripts

User can find all the sample scripts from the following paths:

- 1) %Installation Drive%\Program Files\ULINK DriveMaster 2008
 \SAS_v###\Scripts
- 2) %Installation Drive%\Program Files\ULINK DriveMaster 2008 \SAS_v###\DM
 Control\Scripts

7 Help

With DM 2008 Ent SAS open, press **F1** on the keyboard or go the “**Menu Bar**” and click “**Help**” then select “**Contents**” to bring up the Help file.

8 Customer Support and FAQ

FAQ Link: <http://ulinktech.com/support/index.html>

If user has any question about the installation of DM 2008 Ent SAS, please contact ULINK either by email or phone:

ULINK TECHNOLOGY, INC.

Email: support@ulinktech.com

Phone: (408) 446-8455