

DriveMaster 2008 Professional QA
(DM 2008 Pro QA)

Installation Guide

Revision 1.0

ULINK Technology Inc.

July 2008

1	SYSTEM REQUIREMENTS	3
2	HBA CONFIGURATION	4
2.1	ADD-ON IDE/SATA CONTROLLER INSTALLATION	4
2.2	IDE/SATA CONTROLLER DRIVER INSTALLATION	4
2.3	IF THE TESTING HOST IS ON THE MOTHERBOARD	4
2.4	IF THE TESTING HOST IS AN ADD-ON CONTROLLER	4
3	ULINK POWER HUB INSTALLATION	6
4	INSTALL DM 2008 PRO QA	7
5	RUN DM 2008 PRO QA	8
5.1	USB KEY CHECK	8
5.2	DRIVEMASTER MULTIPLE CONTROL PANEL	8
5.3	RUNNING DM 2008 Pro QA	8
6	SAMPLE TEST SCRIPTS	10
7	HELP	10
8	CUSTOMER SUPPORT AND FAQ	10

1 System Requirements

- 1) Windows Vista, XP or 2003 Operating System
Note: Windows XP and above is highly recommended
- 2) CPU: Core 2 Duo is recommend for 2 Devices Under Test
Core 2 Quad is recommend for 4 Devices Under Test
- 3) RAM: 1024MB RAM or higher for 2 Devices Under Test
2048MB RAM or higher for 4 Devices Under Test
2048MB RAM or higher is recommend for Vista Operating System
- 4) Motherboard with IDE Controller based on the Intel ICHx chipset or above or equivalent, e.g. HP with AMD chipset or VIA system
- 5) One PCI or PCI-E to ATA or SATA (Depends on the system drive) add-on card (e.g. Promise TX2 plus or equivalent)
- 6) Minimum 32MB video card. 64MB and above is recommended.
- 7) At least 100MB free space for system drive

2 HBA Configuration

The system hard drive needs to be connected to an add-on IDE/SATA controller if use wants to use the host controller on the motherboard as the testing host.

The Device under Test (DUT) needs to be connected to the testing host such as a SATA port on the motherboard or on the Controller Card (Add-on Card).

2.1 Add-on IDE/SATA Controller Installation

- 1) Remove the cover of the PC system.
- 2) Find an available 32-bit PCI or PCI-E slot on the motherboard.
- 3) Plug in the add-on IDE/SATA controller card into the corresponding slot.
- 4) Fasten the controller card bracket to the system case.

2.2 IDE/SATA Controller Driver Installation

- 1) After installing the add-on controller card and rebooting the system, Window setup will show a “**Found New Hardware**” dialog box. Under Windows, “**Mass Storage Controller**” will be displayed. (The title of the storage controllers might be different depends on the operating system)
- 2) Insert the add-on controller driver diskette into the PC.
- 3) Select “**Install the software automatically**” and press the “**Enter**” key. If user is using a driver that has not been digitally signed by Microsoft, user will be asked if user wants to continue the installation. Click on “**Continue anyway**”.
Note: User might also install the driver manually if it is already in the local drive.
- 4) After the “**New Hardware Wizard**” has finished installing the add-on controller driver, click on “**Finish**”.

2.3 If the Testing Host is on the Motherboard

- 1) User needs an add-on IDE/SATA control as the host for operating system. (Refer to 2.1 for installing the add-on controller)
- 2) Install the add-on controller driver. (Refer to 2.2 for detail)
- 3) Shut down the system, and then swap the operating system to the add-on controller.
- 4) Restart the system and boot OS from the add-on controller.
- 5) User should be able to successfully enter into previous OS.
- 6) Now, the host on the motherboard is ready for testing

2.4 If the Testing Host is an Add-on Controller

- 1) Plug in the add-on controller (testing host) into the corresponding slot into the system. (Refer to 2.1 for installing the add-on controller)
- 2) Now, the add-on controller (testing host) is ready for testing.

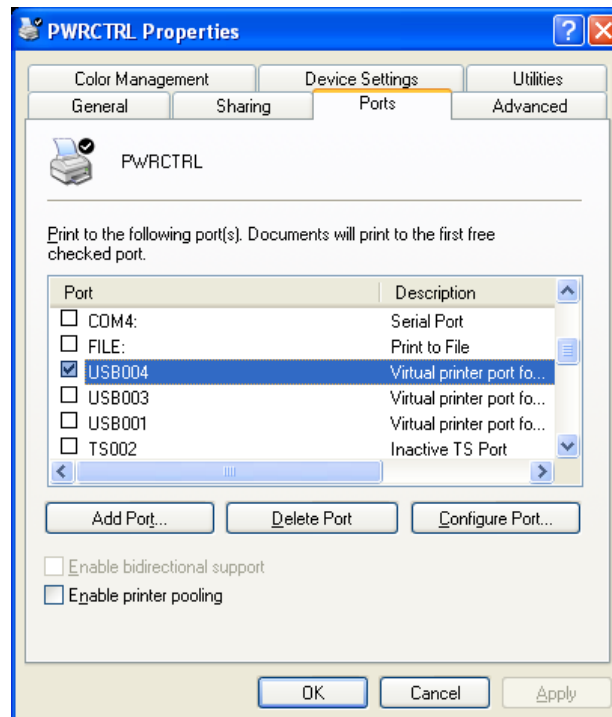
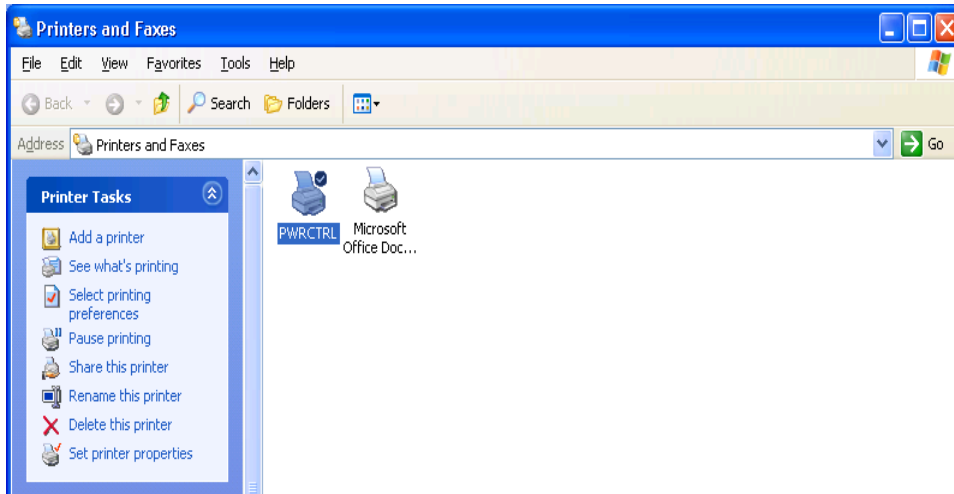
Note: For DM 2008 Pro QA, manufacturer driver is not required; additionally, Microsoft standard driver will also work. Even without the driver, user can simply right click the host controllers under “**IDE ATA/ATAPI controllers**” or “**SCSI and RAID controllers**” and disable it from the “**Device Manager,**” then start the testing.

3 ULINK Power Hub Installation

ULINK Power Hub is controlled through a Virtual Printer.

To install ULINK Power Hub, add a printer with the following settings:

- 1) Select the port to USB00X, where X must be the USB port that ULINK power hub is connected to
- 2) Select the printer driver for either “Epson DFX-5000” or “Epson 600Q ESC/P2”
- 3) The printer name must be set to **PWRCTRL**



For detail information, please refer to ULINK Power Hub Installation Guide.

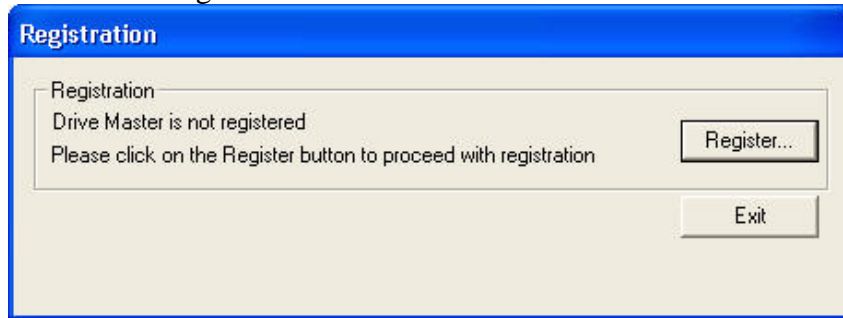
4 Install DM 2008 Pro QA

- 1) Insert the USB key, which comes with the retail version of DM 2008 Pro QA, into a USB port.
- 2) Insert the DM 2008 Pro QA CD into the CD-ROM drive. If installation does not start automatically, run AUTORUN.EXE from the root directory of the CD.
- 3) Then, follow the screen instruction to complete the installation.

5 Run DM 2008 Pro QA

5.1 USB Key check

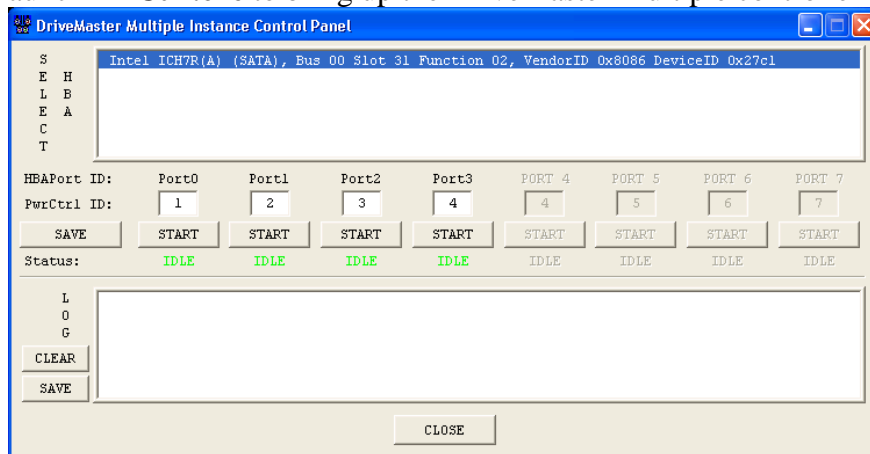
- 1) Check to make sure the USB key is in the USB port all the time while running DM 2008 Pro QA.
Note: If user unplugs the USB Key while DriveMaster is running, the program will exit automatically.
- 2) When launching DM 2008 Pro QA without USB key, user will see the following “Registration” dialog box:



- 3) Click on Exit, then Insert USB key before restarting DM 2008 Pro QA.

5.2 DriveMaster Multiple Control Panel

- 1) Launch MICtrl.exe to bring up the DriveMaster Multiple controller Panel



- 2) Select the HBA as the test host
- 3) Set the **different** number of “PwCtrl ID” from 1 to 4 to configure the source of power on the ULINK Power Hub: it must match with the physical connection
- 4) Click “Start” button individually to bring up the DriveMaster instances

5.3 Running DM 2008 Pro QA

- 1) It is not allowed to switch port.

- 2) If the following status appears in the right log window under DriveMaster, it indicates that DUT is ready.
RTF: XX XX XX XX XX XX 50 50 XX XX XX XX XX
- 3) If the following status appears in the right log window under DriveMaster, it indicates it fails to find the DUT at the current selected port. User can follow the step “2)” on the above to locate the corresponding port.
RTF: XX XX XX XX XX XX 7f 7f XX XX XX XX XX
- 4) Click the “**RTF**” button on the DM Toolbar, TF data will display in the Log window. If the seventh and eighth data on screen both indicate “**50**”, then the communication between host and DUT is established correctly.
- 5) On the “**DM Command Bar**”, user will find “**PwOn**” and “**PwOff**” buttons. These two buttons will not work until user completes the Power Supply/Hub setup. (Refer to item “**3 ULINK Power Supply/Hub Installation**”)

Note: All script commands related to power cycle will require ULINK special Power Supply/Hub.

6 Sample Test Scripts

User can find all the sample scripts from the following paths:

- 5) %Installation Drive%\Program Files\ULINK DriveMaster 2008\QA_v###\Scripts
- 6) %Installation Drive%\Program Files\ULINK DriveMaster 2008 \QA_v###\DM Control\Scripts

7 Help

With DM 2008 Pro QA open, press **F1** on the keyboard or go the “**Menu Bar**” and click “**Help**” then select “**Contents**” to bring up the Help file.

8 Customer Support and FAQ

FAQ Link: <http://ulinktech.com/support/index.html>

If user has any question about the installation of DM 2008 Pro QA, please contact ULINK either by email or phone:

ULINK TECHNOLOGY, INC.

Email: support@ulinktech.com

Phone: (408) 446-8455